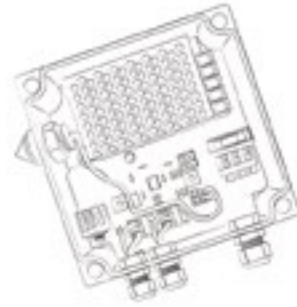




## PRODUCT OVERVIEW

New Panoramic Ultra Illuminators  
New IP PoE Network Illuminators



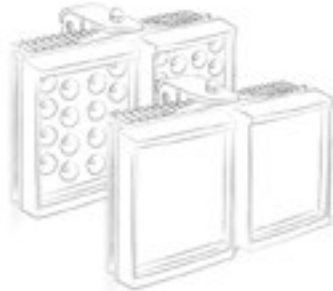
## Committed to technology

Raytec products combine cutting edge technologies with the highest levels of quality to deliver outstanding performance and reliability. Our philosophy is innovation+illumination and we will always look to lead lighting trends in the market.



## Lighting specialists

Raytec and all our people are 100% focused on lighting. Everything from product design, to manufacture, to sales and after sales service is under one roof at our HQ, near Newcastle, UK.



## Who are we?

We are the world leaders in CCTV lighting, providing a range of LED illuminators to create a safer global environment. Our drive is to improve the safety of any area at night and to improve the performance of any CCTV system under darkness.

Founded in 2005, Raytec have two offices, located in Northumberland, UK and Ottawa, Canada.

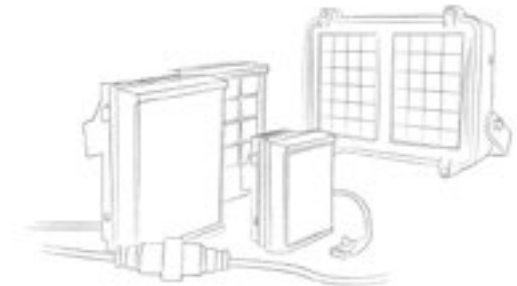
Raytec products are distributed to over 60 countries world-wide, and have been installed everywhere from the Arctic Circle to the Jungles of Borneo.

**10**  
**YEARS**  
2005 - 2015



## Passionate about the environment

Both Raytec LED products, and their specific product features are designed to save energy, electrical costs and reduce Co2 emissions. Raytec are fully ISO14001 accredited.



## A history of innovation

Raytec lead from the front, and have a strong reputation for creating innovative and exciting new products. Within the Raytec portfolio, there are several product firsts, including;

- Adaptive Illumination™
- PoE lighting
- High-Power PoE lighting
- Hybrid Lighting
- IP Lighting
- Explosion Protected LED Lighting

# VARIO

VARIO is a complete family of Infra-Red and White-Light low voltage illuminators delivering the ultimate in functionality, flexibility and reliability. VARIO illuminators combine the latest advances in optics, remote control, electronic feedback and green technology into an outstanding all-round package.

## Description

Low Voltage Infra-Red and White-Light

## Key Features

- VARIO interchangeable lensing
- Hot-spot reduction technology
- VARIO remote control
- Adaptive Illumination™
- IP PoE Network Illuminators
- Hybrid Lighting
- 5 Year Warranty



# rayMAX

RAYMAX Infra-Red illuminators are designed to work in conjunction with B&W or Day and Night Cameras. RAYMAX provides class leading performance, long life, low running costs and zero maintenance. All RAYMAX products deliver even illumination and excellent images during the hours of darkness.

## Description

High Voltage Infra-Red

## Key Features

- Adaptive Illumination™
- Angles from 10 – 180 + degrees
- Energy Saving
- Vandal Resistant
- Active LED life control
- 5 Year Warranty



# rayLUX

RAYLUX White-Light illuminators are designed to work in conjunction with colour CCTV systems or used for general area illumination. All RAYLUX products deliver quick start, crystal clear even illumination and accurate colour representation RAYLUX provides class leading performance, long life, low running costs and zero maintenance.

## Description

High Voltage White-Light

## Key Features

- Adaptive Illumination™
- Angles from 10 – 180 + degrees
- Energy Saving
- Quick Start
- Vandal Resistant
- Active LED life control
- 5 Year Warranty



# rayLUX URBAN

The RAYLUX Urban range illuminators provide multi-purpose and general area lighting for applications such as street & road lighting, footpaths, car parks and campus lighting, industrial lighting as well as lighting for surveillance cameras. RAYLUX Urban product satisfy demands for both camera lighting and commercial lighting.

## Description

White-Light for general area illumination

## Key Features


- CCTV and Commercial Applications
- Energy Saving
- Quick, simple, safe installation
- Active LED Life Control
- Quick Start
- 5 Year Warranty



# SPARTAN

SPARTAN is a full range of ATEX / IECEx LED floodlights for hazardous area environments. Available in Infra-Red and White-Light, SPARTAN delivers the highest performance, most energy efficient, modular and maintenance friendly solution for extreme environments; including oil & gas, off-shore, food processing, chemical plants.

## Description

 Hazardous Area Lighting

## Key Features

- ATEX & IEC EX rated for Zone 1 & 2
- Ultra long LED life
- High lumen output LED
- Modular design and removable PSU
- Wide operating temperature range
- Emergency variants available
- 5 year warranty





**VARIO i8-3**



**VARIO i4-3**



**VARIO i8-2**



**VARIO i4-2**



**VARIO i2-2**

Max Distance	380m (1246ft)	260m (853ft)	310m (1010ft)	220m (722ft)	120m (394ft)
Angles and Max Distances	10°x10° - 380m (1,264ft) 35°x10° - 208m (682ft) 60°x25° - 140m (460ft) 80°x30° - 90m (295ft) 120°x50° - 80m (262ft)	10°x10° - 260m (853ft) 35°x10° - 135m (443ft) 60°x25° - 78m (255ft) 80°x30° - 52m (171ft) 120°x50° - 40m (131ft)	10°x10° - 310m (1,010ft) 35°x10° - 170m (551ft) 60°x25° - 112m (367ft) 80°x30° - 70m (230ft) 120°x50° - 65m (213ft)	10°x10° - 220m (722ft) 35°x10° - 120m (394ft) 60°x25° - 65m (213ft) 80°x30° - 45m (148ft) 120°x50° - 30m (98ft)	10°x10° - 120m (394ft) 35°x10° - 65m (213ft) 60°x25° - 45m (148ft) 80°x30° - 30m (98ft) 120°x50° - 20m (66ft)
Input	12-24V AC/DC	12-24V AC/DC	12-24V AC/DC	12-24V AC/DC	12-24V AC/DC
Beam Shape	Elliptical with HRT (Hot Spot Reduction Technology)	Elliptical with HRT (Hot Spot Reduction Technology)	Elliptical with HRT (Hot Spot Reduction Technology)	Elliptical with HRT (Hot Spot Reduction Technology)	Elliptical with HRT (Hot Spot Reduction Technology)
Beam Angle System	VARIO interchangeable lens system	VARIO interchangeable lens system	VARIO interchangeable lens system	VARIO interchangeable lens system	VARIO interchangeable lens system
Consumption	144W	72W	96W	48W	24W
LED type	Platinum SMT LEDs	Platinum SMT LEDs	Platinum SMT LEDs	Platinum SMT LEDs	Platinum SMT LEDs
Number of LEDs	72	36	48	24	12
Wavelength	850nm (940nm options available)	850nm (940nm options available)	850nm (940nm options available)	850nm (940nm options available)	850nm (940nm options available)
IP Rating	IP66	IP66	IP66	IP66	IP66
Temperature Range	-50° to +50°C (-58 to 122°F)	-50° to +50°C (-58 to 122°F)	-50° to +50°C (-58 to 122°F)	-50° to +50°C (-58 to 122°F)	-50° to +50°C (-58 to 122°F)
Colour	Black	Black	Black	Black	Black
Weight	6kg (13.2lbs)	3.75kg (8.3lbs)	4.5kg (9.9lbs)	2.25kg (5lbs)	1.5kg (3.3lbs)
Dimensions	423 x 226 x 68mm 17" x 9" x 3" approx	318 x 182 x 67mm 12.5" x 7" x 3" approx	279 x 223 x 68mm 11" x 9" x 3" approx	209 x 178 x 67mm 8" x 7" x 3" approx	159 x 144 x 63mm 6" x 5" x 2.5" approx
Additional Features	LED status indicator Photocell following output Photocell Standard kit includes 10°x10°, 35°x10° and 60°x25° angles	LED status indicator Photocell following output Photocell Standard kit includes 10°x10°, 35°x10° and 60°x25° angles	LED status indicator Photocell following output Photocell Standard kit includes 10°x10°, 35°x10° and 60°x25° angles	LED status indicator Photocell following output Photocell Standard kit includes 10°x10°, 35°x10° and 60°x25° angles	LED status indicator Photocell following output Photocell Standard kit includes 10°x10°, 35°x10° and 60°x25° angles
Perfect Partner	Optional VARIO Remote control for increased feature set* VARIO PSU*	Optional VARIO Remote control for increased feature set* VARIO PSU*	Optional VARIO Remote control for increased feature set* VARIO PSU*	Optional VARIO Remote control for increased feature set* VARIO PSU*	Optional VARIO Remote control for increased feature set* VARIO PSU*

\* Please see Accessories on Pages 17-18



**VARIO i16-1**



**VARIO i8-1**



**VARIO i4-1**



**VARIO i2-1**



**VARIO iP PoE i8**



**VARIO iP PoE i4**

Max Distance	310m (1010ft)	220m (722ft)	120m (394ft)	65m (213ft)	220m (722ft)	120m (394ft)
Angles and Max Distances	10°x10° - 310m (1010ft) 35°x10° - 165m (541ft) 60°x25° - 85m (279ft) 80°x30° - 60m (197ft) 120°x50° - 40m (131ft)	10°x10° - 220m (722ft) 35°x10° - 120m (394ft) 60°x25° - 65m (213ft) 80°x30° - 45m (148ft) 120°x50° - 30m (98ft)	10°x10° - 120m (394ft) 35°x10° - 65m (213ft) 60°x25° - 45m (148ft) 80°x30° - 30m (98ft) 120°x50° - 20m (66ft)	10°x10° - 65m (213ft) 35°x10° - 45m (148ft) 60°x25° - 30m (98ft) 80°x30° - 20m (66ft) 120°x50° - 15m (49ft)	10°x10° - 220m (722ft) 35°x10° - 120m (394ft) 60°x25° - 65m (213ft) 80°x30° - 45m (148ft) 120°x50° - 30m (98ft)	10°x10° - 120m (394ft) 35°x10° - 65m (213ft) 60°x25° - 45m (148ft) 80°x30° - 30m (98ft) 120°x50° - 20m (66ft)
Input	24V AC/DC	12-24V AC/DC	12-24V AC/DC	12-24V AC/DC	PoE or 24V DC	PoE or 24V DC
Beam Shape	Elliptical with HRT (Hot Spot Reduction Technology)	Elliptical with HRT (Hot Spot Reduction Technology)	Elliptical with HRT (Hot Spot Reduction Technology)	Elliptical with HRT (Hot Spot Reduction Technology)	Elliptical with HRT (Hot Spot Reduction Technology)	Elliptical with HRT (Hot Spot Reduction Technology)
Beam Angle System	VARIO interchangeable lens system	VARIO interchangeable lens system	VARIO interchangeable lens system	VARIO interchangeable lens system	VARIO interchangeable lens system	VARIO interchangeable lens system
Consumption	96W	48W	24W	12W	50W	25.5W
LED type	Platinum Elite SMT LEDs	Platinum SMT LEDs	Platinum SMT LEDs	Platinum SMT LEDs	Platinum SMT LEDs	Platinum SMT LEDs
Number of LEDs	48	24	12	6	24	12
Wavelength	850nm (940nm options available)	850nm (940nm options available)	850nm (940nm options available)	850nm (940nm options available)	850nm (940nm options available)	850nm (940nm options available)
IP Rating	IP66	IP66	IP66	IP66	IP66	IP66
Temperature Range	-50° to +50°C (-58 to 122°F)	-50° to +50°C (-58 to 122°F)	-50° to +50°C (-58 to 122°F)	-50° to +50°C (-58 to 122°F)	-50° to +50°C (-58 to 122°F)	-50° to +50°C (-58 to 122°F)
Colour	Black	Black	Black	Black	Black	Black
Weight	3.1kg (6.8lbs)	1.65kg (3.6lbs)	950g (2.1lbs)	600g (1.3lbs)	1.65kg (3.6lbs)	950g (2.1lbs)
Dimensions	277 x 180 x 118mm 11" x 7" x 4.6" approx	135 x 180 x 68.2mm 5" x 7" x 3.2" approx	100 x 135 x 66mm 4" x 5" x 2.5" approx	75 x 100 x 64mm 3" x 4" x 2.5" approx	135 x 180 x 68.2mm 5" x 7" x 3.2" approx	100 x 135 x 66mm 4" x 5" x 2.6" approx
Additional Features	LED status indicator Photocell following output Photocell Standard kit includes 10°x10°, 35°x10° and 60°x25° angles	LED status indicator Photocell following output Photocell Standard kit includes 10°x10°, 35°x10° and 60°x25° angles	LED status indicator Photocell following output Photocell Standard kit includes 10°x10°, 35°x10° and 60°x25° angles	LED status indicator Photocell following output Photocell Standard kit includes 10°x10°, 35°x10° and 60°x25° angles	VARIO IP Web Interface Power Control, Boost, Deterrent in basic user settings Control individual lights or groups Standard kit includes 10°x10°, 35°x10° and 60°x25° angles Timer, optional soft start, selectable input / output, advanced set-up and diagnostics	VARIO IP Web Interface Power Control, Boost, Deterrent in basic user settings Control individual lights or groups Standard kit includes 10°x10°, 35°x10° and 60°x25° angles Timer, optional soft start, selectable input / output, advanced set-up and diagnostics
Perfect Partner	Optional VARIO Remote control for increased feature set* VARIO PSU*	Optional VARIO Remote control for increased feature set* VARIO PSU*	Optional VARIO Remote control for increased feature set* VARIO PSU*	Optional VARIO Remote control for increased feature set* VARIO PSU*	API for integration with other platforms VARIO PSU*	API for integration with other platforms VARIO PSU*



rayMAX 300



rayMAX 200



rayMAX 150



rayMAX 100



rayMAX 50



rayMAX 25

Max Distance	370m (1,214ft)	300m (985ft)	183m (600ft)	150m (492ft)	75m (246ft)	35m (115ft)
Angles and Max Distances	10°-30° - 370m (1,214ft) 30°-90° - 200m (656ft)	10°-20° - 300m (985ft) 30°-60° - 160m (525ft) 50°-100° - 112m (367ft) 120°-180° - 64m (210ft)	10°-30° - 183m (600ft) 30°-90° - 100m (328ft) 50°-180° - 70m (230ft)	10°-20° - 150m (492ft) 30°-60° - 80m (262ft) 50°-100° - 56m (184ft) 120°-180° - 32m (105ft)	10°-20° - 75m (246ft) 30°-60° - 40m (131ft) 50°-100° - 28m (92ft) 120°-180° - 16m (52ft)	10° - 35m (115ft) 30° - 20m (66ft) 50° - 14m (46ft) 120° - 8m (26ft)
Input	Universal 100-230V AC - comes with PSU (See details below)	Universal 100-230V AC - comes with PSU (See details below)	Universal 100-230V AC - comes with PSU (See details below)	Universal 100-230V AC - comes with PSU (See details below)	Universal 100-230V AC - comes with PSU (See details below)	Universal 100-230V AC - comes with PSU (See details below)
Beam Shape	Circular	Circular	Circular	Circular	Circular	Circular
Beam Angle System	Ultimate Adaptive Illumination™	Adaptive Illumination™	Ultimate Adaptive Illumination™	Adaptive Illumination™	Adaptive Illumination™	Fixed
Consumption	120W	80W	75W	50W	20W	10W
LED type	SMT LEDs	SMT LEDs	SMT LEDs	SMT LEDs	SMT LEDs	SMT LEDs
Number of LEDs	594	396	324	198	108	45
Wavelength	850nm (940nm options available)	850nm (940nm options available)	850nm (940nm options available)	850nm (940nm options available)	850nm (940nm options available)	850nm (940nm options available)
IP Rating	IP66	IP66	IP66	IP66	IP66	IP66
Temperature Range	-50° to +50°C (-58 to 122°F)	-50° to +50°C (-58 to 122°F)	-50° to +50°C (-58 to 122°F)	-50° to +50°C (-58 to 122°F)	-50° to +50°C (-58 to 122°F)	-50° to +50°C (-58 to 122°F)
Colour	Black	Black	Black	Black	Black	Black
Weight	6kg (13.2lbs)	4kg (8.8lbs)	3.75kg (8.3lbs)	4kg (8.8lbs)	1.7kg (3.7lbs)	0.5kg (1.1lbs)
Dimensions	420 x 195 x 66mm 16" x 8" x 3" approx	280 x 195 x 66mm 11" x 8" x 3" approx	315 x 135 x 55mm 12" x 5" x 2" approx	210 x 150 x 65mm 8" x 6" x 3" approx	160 x 115 x 54mm 6" x 4" x 2" approx	75 x 100 x 54mm 3" x 4" x 2" approx
Additional Features	Power Adjust Telemetry Control Adjustable Photocell	Power Adjust Telemetry Control Adjustable Photocell	Power Adjust Telemetry Control Adjustable Photocell	Power Adjust Telemetry Control Adjustable Photocell	Power Adjust Telemetry Control Adjustable Photocell	Power Adjust Telemetry Control Adjustable Photocell
Perfect Partner	See Accessories Section*	See Accessories Section*	See Accessories Section*	See Accessories Section*	See Accessories Section*	See Accessories Section*

External Power Supply (included)

Input	Universal 100-230V AC auto-sensing	Universal 100-230V AC auto-sensing	Universal 100-230V AC auto-sensing	Universal 100-230V AC auto-sensing	Universal 100-230V AC auto-sensing	Universal 100-230V AC auto-sensing
Output	120W	80W	75W	50W	20W	10W
Weights	2.4kg (5.3lbs)	1.8kg (4lbs)	2.4kg (5.3lbs)	1.5kg (3.3lbs)	0.9kg (2lbs)	0.9kg (2lbs)
Dimensions	240 x 160 x 81mm 9" x 6" x 3" approx	160 x 160 x 90mm 6" x 6" x 4" approx	240 x 160 x 81mm 9" x 6" x 3" approx	160 x 160 x 90mm 6" x 6" x 4" approx	160 x 120 x 80mm 6" x 5" x 3" approx	160 x 120 x 80mm 6" x 5" x 3" approx

\* Please see Accessories on Pages 17-18



**rayMAX 300**  
PANORAMIC ULTRA



**rayMAX 150**  
PANORAMIC ULTRA



**rayMAX 300**  
PLATINUM\*



**rayMAX 200**  
PLATINUM\*



**rayMAX 100**  
PLATINUM\*



**rayMAX 50 PoE**



**rayMAX 25 PoE**

Max Distance	260m (853ft)	170m (558ft)	1000m (3,280ft) - with 2 units	300m (985ft)	150m (492ft)	60m (197ft)	30m (98ft)
Angles and Max Distances	60 x 5° - 260m (853ft) 180 x 5° - 150m (492ft)	60 x 5° - 170m (558ft) 180 x 5° - 100m (328ft)	5°-15° - 700m (2,297ft) 10°-30° - 370m (1,214ft) 30°-90° - 250m (820ft) 50°-180° - 175m (575ft)	10°-20° - 300m (985ft) 30°-60° - 220m (722ft) 50°-100° - 140m (459ft) 120°-180° - 70m (230ft)	10°-20° - 150m (492ft) 30°-60° - 130m (427ft) 50°-100° - 90m (295ft) 120°-180° - 50m (164ft)	10° - 60m (197ft) 30° - 40m (131ft) 50° - 28m (92ft) 120° - 16m (52ft)	10° - 30m (98ft) 30° - 20m (66ft) 50° - 14m (46ft) 120° - 8m (26ft)
Input	Universal 100-230V AC - comes with PSU (See details below)	Universal 100-230V AC - comes with PSU (See details below)	Universal 100-230V AC - comes with PSU (See details below)	Universal 100-230V AC - comes with PSU (See details below)	Universal 100-230V AC - comes with PSU (See details below)	PoE only	PoE or 24Vac/dc or 12Vdc
Beam Shape	Elliptical with HRT (Hot Spot Reduction Technology)	Elliptical with HRT (Hot Spot Reduction Technology)	Circular	Circular	Circular	Circular	Circular
Beam Angle System	Ultimate Adaptive Illumination™	Ultimate Adaptive Illumination™	Ultimate Adaptive Illumination™	Adaptive Illumination™	Adaptive Illumination™	Circular	Circular
Consumption	165W	105W	165W	100W	70W	25W	10W
LED type	Platinum Elite SMT LEDs	Platinum Elite SMT LEDs	Platinum SMT LEDs	Platinum SMT LEDs	Platinum SMT LEDs	Platinum SMT LEDs	Platinum SMT LEDs
Number of LEDs	72	48	72	48	32	12	6
Wavelength	850nm (940nm options available)	850nm (940nm options available)	850nm (940nm options available)	850nm (940nm options available)	850nm (940nm options available)	850nm (940nm options available)	850nm (940nm options available)
IP Rating	IP66	IP66	IP66	IP66	IP66	IP66	Indoor Applications Only
Temperature Range	-50° to +50°C (-58 to 122°F)	-50° to +50°C (-58 to 122°F)	-50° to +50°C (-58 to 122°F)	-50° to +50°C (-58 to 122°F)	-50° to +50°C (-58 to 122°F)	-50° to +50°C (-58 to 122°F)	-50° to +50°C (-58 to 122°F)
Colour	Black	Black	Black	Black	Black	Black	Black
Weight	6kg (13.2lbs)	3.75kg (8.3lbs)	6kg (13.2lbs)	4kg (8.8lbs)	2.5kg (5.5lbs)	1.0kg (2.2lbs)	0.5kg (1.1lbs)
Dimensions	420 x 195 x 66mm 16" x 8" x 3" approx	315 x 135 x 55mm 12" x 5" x 2" approx	420 x 195 x 66mm 16" x 8" x 3" approx	280 x 195 x 66mm 11" x 8" x 3" approx	210 x 150 x 65mm 8" x 6" x 3" approx	135 x 100 x 63mm 5.25" x 4" x 2.5" approx	75 x 100 x 54mm 3" x 4" x 2" approx
Additional Features	Power Adjust Telemetry Control Adjustable Photocell	Power Adjust Telemetry Control Adjustable Photocell	Power Adjust Telemetry Control Adjustable Photocell	Power Adjust Telemetry Control Adjustable Photocell	Power Adjust Telemetry Control Adjustable Photocell	Power adjust Adjustable Photocell Integrated Command and Control Technology	Power adjust Adjustable Photocell Integrated Command and Control Technology
Perfect Partner	See Accessories Section*	See Accessories Section*	See Accessories Section*	See Accessories Section*	See Accessories Section*	See Accessories Section*	See Accessories Section*

External Power Supply (included)

Input	Universal 100-230V AC auto-sensing	Universal 100-230V AC auto-sensing	Universal 100-230V AC auto-sensing	Universal 100-230V AC auto-sensing	Universal 100-230V AC auto-sensing		
Output	165W	105W	165W	100W	70W		
Weights	2.4kg (5.3lbs)	2.4kg (5.3lbs)	2.4kg (5.3lbs)	1.8kg (4lbs)	1.8kg (4lbs)		
Dimensions	240 x 160 x 81mm 9" x 6" x 3" approx	240 x 160 x 81mm 9" x 6" x 3" approx	240 x 160 x 81mm 9" x 6" x 3" approx	160 x 160 x 90mm 6" x 6" x 4" approx	160 x 160 x 90mm 6" x 6" x 4" approx		



**VARIO w8-3**



**VARIO w4-3**



**VARIO w8-2**



**VARIO w4-2**



**VARIO w2-2**

Max Distance	260m (853ft)	170m (558ft)	210m (689ft)	150m (492ft)	90m (295ft)
Angles and Max Distances**	10°x10° - 260m (853ft) 35°x10° - 139m (456ft) 60°x25° - 83m (272ft) 80°x30° - 52m (171ft) 120°x50° - 35m (115ft)	10°x10° - 170m (558ft) 35°x10° - 95m (312ft) 60°x25° - 55m (180ft) 80°x30° - 35m (115ft) 120°x50° - 26m (85ft)	10°x10° - 210m (689ft) 35°x10° - 112m (367ft) 60°x25° - 65m (213ft) 80°x30° - 42m (133ft) 120°x50° - 30m (98ft)	10°x10° - 150m (492ft) 35°x10° - 80m (262ft) 60°x25° - 45m (148ft) 80°x30° - 30m (98ft) 120°x50° - 20m (66ft)	10°x10° - 90m (295ft) 35°x10° - 55m (180ft) 60°x25° - 30m (98ft) 80°x30° - 20m (66ft) 120°x50° - 15m (49ft)
Input	12-24V AC/DC	12-24V AC/DC	12-24V AC/DC	12-24V AC/DC	12-24V AC/DC
Beam Shape	Elliptical with HRT (Hot Spot Reduction Technology)	Elliptical with HRT (Hot Spot Reduction Technology)	Elliptical with HRT (Hot Spot Reduction Technology)	Elliptical with HRT (Hot Spot Reduction Technology)	Elliptical with HRT (Hot Spot Reduction Technology)
Beam Angle System	VARIO interchangeable lens system	VARIO interchangeable lens system	VARIO interchangeable lens system	VARIO interchangeable lens system	VARIO interchangeable lens system
Consumption	144W	72W	96W	48W	24W
LED type	Platinum SMT LEDs	Platinum SMT LEDs	Platinum SMT LEDs	Platinum SMT LEDs	Platinum SMT LEDs
Number of LEDs	72	36	48	24	12
Power Output (luminous flux)	8520lm	4356lm	5680lm	2904lm	1466lm
Wavelength	White-Light	White-Light	White-Light	White-Light	White-Light
IP Rating	IP66	IP66	IP66	IP66	IP66
Temperature Range	-50° to +50°C (-58 to 122°F)	-50° to +50°C (-58 to 122°F)	-50° to +50°C (-58 to 122°F)	-50° to +50°C (-58 to 122°F)	-50° to +50°C (-58 to 122°F)
Colour Temperature	5700k	5700k	5700k	5700k	5700k
Colour	Silver	Silver	Silver	Silver	Silver
Weight	6kg (13.2lbs)	3.75kg (8.3lbs)	4.5kg (9.9lbs)	2.25kg (5lbs)	1.5kg (3.3lbs)
Dimensions	423 x 226 x 68mm 17" x 9" x 3" approx	318 x 182 x 67mm 12.5" x 7" x 3" approx	279 x 223 x 68mm 11" x 9" x 3" approx	209 x 178 x 67mm 8" x 7" x 3" approx	159 x 144 x 63mm 6" x 5" x 2.5" approx
Additional Features	LED status indicator Photocell following output Photocell Standard kit includes 10°x10°, 35°x10° and 60°x25° angles	LED status indicator Photocell following output Photocell Standard kit includes 10°x10°, 35°x10° and 60°x25° angles	LED status indicator Photocell following output Photocell Standard kit includes 10°x10°, 35°x10° and 60°x25° angles	LED status indicator Photocell following output Photocell Standard kit includes 10°x10°, 35°x10° and 60°x25° angles	LED status indicator Photocell following output Photocell Standard kit includes 10°x10°, 35°x10° and 60°x25° angles
Perfect Partner	Optional VARIO Remote control for increased feature set* VARIO PSU*	Optional VARIO Remote control for increased feature set* VARIO PSU*	Optional VARIO Remote control for increased feature set* VARIO PSU*	Optional VARIO Remote control for increased feature set* VARIO PSU*	Optional VARIO Remote control for increased feature set* VARIO PSU*

\* Please see Accessories on Pages 17-18

\*\* Distances for surveillance purposes only - NOT for general area illumination





**VARIO w16-1**



**VARIO w8-1**



**VARIO w4-1**



**VARIO w2-1**



**VARIO iP PoE w8**



**VARIO iP PoE w4**

Max Distance	210m (689ft)	150m (492ft)	90m (295ft)	50m (164ft)	150m (492ft)	90m (295ft)
Angles and Max Distances	10°x10° - 210m (689ft) 35°x10° - 110m (361ft) 60°x25° - 60m (197ft) 80°x30° - 40m (131ft) 120°x50° - 30m (98ft)	10°x10° - 150m (492ft) 35°x10° - 80m (262ft) 60°x25° - 45m (148ft) 80°x30° - 20m (66ft) 120°x50° - 20m (66ft)	10°x10° - 90m (295ft) 35°x10° - 55m (180ft) 60°x25° - 30m (98ft) 80°x30° - 20m (66ft) 120°x50° - 15m (49ft)	10°x10° - 50m (164ft) 35°x10° - 35m (115ft) 60°x25° - 20m (66ft) 80°x30° - 15m (49ft) 120°x50° - 10m (33ft)	10°x10° - 150m (492ft) 35°x10° - 80m (262ft) 60°x25° - 45m (148ft) 80°x30° - 30m (98ft) 120°x50° - 20m (66ft)	10°x10° - 90m (295ft) 35°x10° - 55m (180ft) 60°x25° - 30m (98ft) 80°x30° - 20m (66ft) 120°x50° - 15m (49ft)
Input	24V AC/DC	12-24V AC/DC	12-24V AC/DC	12-24V AC/DC	PoE or 24V DC	PoE or 24V DC
Beam Shape	Elliptical with HRT (Hot Spot Reduction Technology)	Elliptical with HRT (Hot Spot Reduction Technology)	Elliptical with HRT (Hot Spot Reduction Technology)	Elliptical with HRT (Hot Spot Reduction Technology)	Elliptical with HRT (Hot Spot Reduction Technology)	Elliptical with HRT (Hot Spot Reduction Technology)
Beam Angle System	VARIO interchangeable lens system	VARIO interchangeable lens system	VARIO interchangeable lens system	VARIO interchangeable lens system	VARIO interchangeable lens system	VARIO interchangeable lens system
Consumption	96W	48W	24W	12W	50W	25.5W
LED type	Platinum Elite SMT LEDs	Platinum SMT LEDs	Platinum SMT LEDs	Platinum SMT LEDs	Platinum SMT LEDs	Platinum SMT LEDs
Number of LEDs	48	24	12	6	24	12
Power Output (luminous flux)	5680lm	2840lm	1452lm	733lm	2840lm	1452lm
Wavelength	White-Light	White-Light	White-Light	White-Light	White-Light	White-Light
IP Rating	IP66	IP66	IP66	IP66	IP66	IP66
Temperature Range	-50° to +50°C (-58 to 122°F)	-50° to +50°C (-58 to 122°F)	-50° to +50°C (-58 to 122°F)	-50° to +50°C (-58 to 122°F)	-50° to +50°C (-58 to 122°F)	-50° to +50°C (-58 to 122°F)
Colour Temperature	5700k	5700k	5700k	5700k	5700k	5700k
Colour	Silver	Silver	Silver	Silver	Silver	Silver
Weight	3.1kg(6.8lbs)	1.65kg (3.6lbs)	950g (2.1lbs)	600g (1.3lbs)	1.65kg (3.6lbs)	950g (2.1lbs)
Dimensions	277 x 180 x 118mm 11" x 7" x 4.6" approx	135 x 180 x 68.2mm 5" x 7" x 3.2" approx	100 x 135 x 66mm 4" x 5" x 2.5" approx	75 x 100 x 64mm 3" x 4" x 2.5" approx	135 x 180 x 68.2mm 5" x 7" x 3.2" approx	100 x 135 x 66mm 4" x 5" x 2.5" approx
Additional Features	LED status indicator Photocell following output Photocell Standard kit includes 10°x10°, 35°x10° and 60°x25° angles	LED status indicator Photocell following output Photocell Standard kit includes 10°x10°, 35°x10° and 60°x25° angles	LED status indicator Photocell following output Photocell Standard kit includes 10°x10°, 35°x10° and 60°x25° angles	LED status indicator Photocell following output Photocell Standard kit includes 10°x10°, 35°x10° and 60°x25° angles	VARIO IP Web Interface. Power Control, Boost, Deterrent in basic user settings. Control individual lights or groups. Standard kit includes 10°x10°, 35°x10° and 60°x25° angles. Timer, optional soft start, selectable input / output, advanced set-up and diagnostics.	VARIO IP Web Interface. Power Control, Boost, Deterrent in basic user settings. Control individual lights or groups. Standard kit includes 10°x10°, 35°x10° and 60°x25° angles. Timer, optional soft start, selectable input / output, advanced set-up and diagnostics.
Perfect Partner	Optional VARIO Remote control for increased feature set* VARIO PSU*	Optional VARIO Remote control for increased feature set* VARIO PSU*	Optional VARIO Remote control for increased feature set* VARIO PSU*	Optional VARIO Remote control for increased feature set* VARIO PSU*	API for integration with other platforms VARIO PSU*	API for integration with other platforms VARIO PSU*

# White-Light



rayLUX 300



rayLUX 200



rayLUX 150



rayLUX 100



rayLUX 50



rayLUX 25

Max Distance	320m (1,049ft)	200m (656ft)	150m (492ft)	120m (394ft)	60m (197ft)	35m (115ft)
Angles and Max Distances**	5°-15° - 320m (1,049ft) 10°-30° - 240m (787ft) 30°-90° - 130m (427ft) 50°-180° - 90m (295ft)	10°-20° - 200m (656ft) 30°-60° - 105m (344ft) 50°-100° - 80m (262ft) 120°-180° - 30m (98ft)	10°-30° - 150m (492ft) 30°-90° - 80m (262ft) 50°-180° - 55m (180ft)	10°-20° - 120m (394ft) 30°-60° - 65m (213ft) 50°-100° - 45m (147ft) 120°-180° - 18m (59ft)	10°-20° - 60m (197ft) 30°-60° - 40m (131ft) 50°-100° - 28m (92ft) 120°-180° - 12m (39ft)	10° - 35m (115ft) 30° - 20m (66ft) 50° - 14m (46ft) 120° - 8m (26ft)
Input	Universal 100-230V AC - comes with PSU (See details below)	Universal 100-230V AC - comes with PSU (See details below)	Universal 100-230V AC - comes with PSU (See details below)	Universal 100-230V AC - comes with PSU (See details below)	Universal 100-230V AC - comes with PSU (See details below)	Universal 100-230V AC - comes with PSU (See details below)
Beam Shape	Circular	Circular	Circular	Circular	Circular	Circular
Beam Angle System	Ultimate Adaptive Illumination™	Adaptive Illumination™	Ultimate Adaptive Illumination™	Adaptive Illumination™	Adaptive Illumination™	Fixed
Consumption	120W	80W	75W	50W	25W	15W
LED type	Platinum SMT LEDs	Platinum SMT LEDs	Platinum SMT LEDs	Platinum SMT LEDs	Platinum SMT LEDs	Platinum SMT LEDs
Number of LEDs	72	48	48	32	16	8
Power Output (luminous flux)	6273lm	4250lm	4182lm	2788lm	1600lm	800lm
Wavelength	White Light	White Light	White Light	White Light	White Light	White Light
IP Rating	IP66	IP66	IP66	IP66	IP66	IP66
Temperature Range	-50° to +50°C (-58 to 122°F)	-50° to +50°C (-58 to 122°F)	-50° to +50°C (-58 to 122°F)	-50° to +50°C (-58 to 122°F)	-50° to +50°C (-58 to 122°F)	-50° to +50°C (-58 to 122°F)
Colour Temperature	5800k	5800k	5800k	5800k	5800k	5800k
Colour	Silver	Silver	Silver	Silver	Silver	Silver
Weight	6kg (13.2lbs)	4kg (8.8lbs)	3.75kg (8.3lbs)	2.5kg (5.5lbs)	1.7kg (3.7lbs)	0.5kg (1.1lbs)
Dimensions	420 x 195 x 66mm 16" x 8" x 3" approx	280 x 195 x 66mm 11" x 8" x 3" approx	315 x 135 x 55mm 12" x 5" x 2" approx	210 x 150 x 65mm 8" x 6" x 3" approx	160 x 115 x 54mm 6" x 4" x 2" approx	75 x 100 x 54mm 3" x 4" x 2" approx
Additional Features	Power Adjust Telemetry Control Adjustable Photocell	Power Adjust Telemetry Control Adjustable Photocell	Power Adjust Telemetry Control Adjustable Photocell	Power Adjust Telemetry Control Adjustable Photocell	Power Adjust Telemetry Control Adjustable Photocell	Power Adjust Telemetry Control Adjustable Photocell
Perfect Partner	See Accessories Section*	See Accessories Section*	See Accessories Section*	See Accessories Section*	See Accessories Section*	See Accessories Section*

## External Power Supply (included)

Input	Universal 100-230V AC auto-sensing	Universal 100-230V AC auto-sensing	Universal 100-230V AC auto-sensing	Universal 100-230V AC auto-sensing	Universal 100-230V AC auto-sensing	Universal 100-230V AC auto-sensing
Output	120W	80W	75W	50W	25W	15W
Weights	2.4kg (5.3lbs)	1.8kg (4lbs)	2.4kg (5.3lbs)	1.5kg (3.3lbs)	0.9kg (2lbs)	0.9kg (2lbs)
Dimensions	240mm x 160mm x 81mm 9" x 6" x 3" approx	160 x 160 x 90mm 6" x 6" x 4" approx	240 x 160 x 81mm 9" x 6" x 3" approx	160 x 160 x 90mm 6" x 6" x 4" approx	160 x 120 x 80mm 6" x 5" x 3" approx	160 x 120 x 80mm 6" x 5" x 3" approx

\* Please see Accessories on Pages 17-18

\*\* Distances for surveillance purposes only - NOT for general area illumination



**rayLUX 300**  
PANORAMIC



**rayLUX 150**  
PANORAMIC



**rayLUX 50 PoE**

Max Distance	83m (272ft)	68m (41ft)	50m (164ft)
Angles and Max Distances	60-180x25° - 83m (272ft) 180° - 51m (167ft) 60° - 83m (272ft)	60-180x25° - 68m (223ft) 180° - 41m (135ft) 60° - 68m (223ft)	10° - 50m (164ft) 30° - 35m (115ft) 50° - 25m (82ft) 120° - 10m (33ft)
Input	Universal 100-230V AC - comes with PSU (See details below)	Universal 100-230V AC - comes with PSU (See details below)	PoE only
Beam Shape	Elliptical with HRT (Hot Spot Reduction Technology)	Elliptical with HRT (Hot Spot Reduction Technology)	Circular
Beam Angle System	Ultimate Adaptive Illumination™	Ultimate Adaptive Illumination™	Fixed
Consumption	120W	75W	25W
LED type	Platinum SMT LEDs	Platinum SMT LEDs	Platinum SMT LEDs
Number of LEDs	72	48	12
Power Output (luminous flux)	7770lm	5178lm	986lm
Wavelength	White Light	White Light	White-Light
IP Rating	IP66	IP66	IP66
Temperature Range	-50° to +50°C (-58 to 122°F)	-50° to +50°C (-58 to 122°F)	-50° to +50°C (-58 to 122°F)
Colour Temperature	5700k	5700k	5700k
Colour	Silver	Silver	Black
Weight	6kg (13.2lbs)	3.75kg (8.3lbs)	1.0kg (2.2lbs)
Dimensions	420 x 195 x 66mm 16" x 8" x 3" approx	315 x 135 x 55mm 12" x 5" x 2" approx	135 x 100 x 63mm 5.25" x 4" x 2.5" approx
Additional Features	Power Adjust Telemetry Control Adjustable Photocell	Power Adjust Telemetry Control Adjustable Photocell	Power adjust, Adjustable Photocell Integrated Command and Control Technology
Perfect Partner	See Accessories Section*	See Accessories Section*	See Accessories Section*

External Power Supply (included)

Input	Universal 100-230V AC auto-sensing	Universal 100-230V AC auto-sensing	
Output	120W	75W	
Weights	2.4kg (5.3lbs)	2.4kg (5.3lbs)	
Dimensions	240 x 160 x 81mm 9" x 6" x 3" approx	240 x 160 x 81mm 9" x 6" x 3" approx	



rayLUX URBAN PLUS 70



rayLUX URBAN PLUS 56



rayLUX URBAN PLUS 42



rayLUX URBAN BAY

Angles available	120°H x 30°V (20° offset) 140°H x 30°V (20° offset) 160°	120°H x 30°V (20° offset) 140°H x 30°V (20° offset) 160°	120°H x 30°V (20° offset) 140°H x 30°V (20° offset) 160°	120° H x 35° V 60° 120°
Input	Universal 100-230V AC Integrated Driver PSU	Universal 100-230V AC Integrated Driver PSU	Universal 100-230V AC Integrated Driver PSU	Universal 100-230V AC Integrated Driver PSU
Beam Shape	Elliptical - Bat Wing design Blended Optics	Elliptical - Bat Wing design Blended Optics	Elliptical - Bat Wing design Blended Optics	Circular or Elliptical
Beam Angle System	Fixed	Fixed	Fixed	Fixed
Consumption	79W	61W	48W	145W
LED type	Platinum SMT LEDs	Platinum SMT LEDs	Platinum SMT LEDs	Platinum SMT LEDs
Number of LEDs	70	56	42	70
Power Output (Lumens)	7645lm	6215lm	4660lm	Neutral White - 11890lm Cool White - 12936lm
Wavelength	White Light	White-Light	White-Light	White Light
IP Rating	IP66	IP66	IP66	IP21
Temperature Range	-40 to +40°C (-40 to 104°F)	-40 to +40°C (-40 to 104°F)	-40 to +40°C (-40 to 104°F)	-40 to +40°C (-40 to 104°F)
Colour Temperature	5300K	5300K	5300K	Neutral White - 4350k Cool White - 5300k
Colour	Black	Black	Black	Silver
Weight	12kg / 26lbs supplied in 2 parts (6kg / 13lbs each)	12kg / 26lbs supplied in 2 parts (6kg / 13lbs each)	12kg / 26lbs supplied in 2 parts (6kg / 13lbs each)	7kg (15.4lbs) supplied in 2 parts
Dimensions	667 x 276 x 210mm (26" x 11" x 8" approx)	667 x 276 x 210mm (26" x 11" x 8" approx)	667 x 276 x 210mm (26" x 11" x 8" approx)	366.5 x 256 x 107.2mm (14.4" x 10" X 4.2" approx)
Additional Features	2 Piece lightweight design for quick 1 man installation Easy Beam Adjust for vertical alignment Bi-Directional Mounting System (H or V)	2 Piece lightweight design for quick 1 man installation Easy Beam Adjust for vertical alignment Bi-Directional Mounting System (H or V)	2 Piece lightweight design for quick 1 man installation Easy Beam Adjust for vertical alignment Bi-Directional Mounting System (H or V)	2 Piece lightweight design for quick 1 man installation Interfaces with Major lighting controls



rayLUX URBAN UBA48



rayLUX URBAN UBA32



rayLUX URBAN UBF24



rayLUX URBAN UBF16

Angles available	50° 120° 120° H x 80° V	50° 120° 120° H x 80° V	50° 120° 120° H x 80° V	50° 120° 120° H x 80° V
Input	Universal 100-230V AC - comes with PSU (See details below)	Universal 100-230V AC - comes with PSU (See details below)	Universal 100-230V AC - comes with PSU (See details below)	Universal 100-230V AC - comes with PSU (See details below)
Beam Shape	Circular or Elliptical	Circular or Elliptical	Circular or Elliptical	Circular or Elliptical
Beam Angle System	Adaptive Illumination™	Adaptive Illumination™	Fixed	Fixed
Consumption	80W	50W	40W	25W
LED type	Platinum SMT LEDs	Platinum SMT LEDs	Platinum SMT LEDs	Platinum SMT LEDs
Number of LEDs	48	32	24	16
Power Output (Lumens)	4156lm	2772lm	2078lm	1580lm
Wavelength	White Light	White-Light	White-Light	White Light
IP Rating	IP66	IP66	IP66	IP66
Temperature Range	-50° to +50°C (-58 to 122°F)	-50° to +50°C (-58 to 122°F)	-50° to +50°C (-58 to 122°F)	-50° to +50°C (-58 to 122°F)
Colour Temperature	5800k	5800k	5800k	5800k
Colour	Silver	Silver	Silver	Silver
Weight	5kg (11lbs) (excluding brackets)	4kg (8.8 lbs) (excluding brackets)	3kg (6.6lbs) (excluding brackets)	2.5kg (5.5lbs) (excluding brackets)
Dimensions	443 x 270 x 76mm 17" x 11" x 3" approx (inc. light spill shield)	345 x 215 x 74mm 14" x 8" x 3" approx (inc. light spill shield)	300 x 270 x 76mm 12" x 11" x 3" approx (inc. light spill shield)	236 x 215 x 74mm 9" x 8" x 3" approx (inc. light spill shield)
Additional Features	Power Adjust Telemetry Control Adjustable Photocell	Power Adjust Telemetry Control Adjustable Photocell	Power Adjust Telemetry Control Adjustable Photocell	Power Adjust Telemetry Control Adjustable Photocell

External Power Supply (included)

Input	Universal 100-230V AC auto-sensing	Universal 100-230V AC auto-sensing	Universal 100-230V AC auto-sensing	Universal 100-230V AC auto-sensing
Output	80W	50W	40W	25W
Weights	1.8kg (4lbs)	1.1 kg (2.4lbs)	1.1 kg (2.4lbs)	1.1 kg (2.4lbs)
Dimensions	160 x 160 x 90mm 6" x 6" x 4" approx	300 x 80 x 55mm 12" x 3" x 2" approx	300 x 80 x 55mm 12" x 3" x 2" approx	300 x 80 x 55mm 12" x 3" x 2" approx



<b>Certification</b>	ATEX and IEC Ex rated for zone 1&2 Gas and Dust C1D2 and C2D2 pending	ATEX and IEC Ex rated for zone 1&2 Gas and Dust C1D2 and C2D2 pending	ATEX and IEC Ex rated for zone 1&2 Gas and Dust C1D2 and C2D2 pending	ATEX and IEC Ex rated for zone 1&2 Gas and Dust C1D2 and C2D2 pending	ATEX and IEC Ex rated for zone 1&2 Gas and Dust C1D2 and C2D2 pending
<b>Angles and Max Distances</b>	10°x10° - 459m (1,506ft) 35°x10° - 224m (735ft) 60°x25° - 160m (525ft) 80°x30° - 103m (338ft) 120°x50° - 69m (226ft) + 30, 50 and 120° circular options	10°x10° - 459m (1,506ft) 35°x10° - 224m (735ft) 60°x25° - 160m (525ft) 80°x30° - 103m (338ft) 120°x50° - 69m (226ft) + 30, 50 and 120° circular options	10°x10° - 325m (1,066ft) 35°x10° - 158m (518ft) 60°x25° - 113m (371ft) 80°x30° - 73m (240ft) 120°x50° - 49m (161ft) + 30, 50 and 120° circular options	10°x10° - 325m (1,066ft) 35°x10° - 158m (518ft) 60°x25° - 113m (371ft) 80°x30° - 73m (240ft) 120°x50° - 49m (161ft) + 30, 50 and 120° circular options	10°x10° - 230m (755ft) 35°x10° - 112m (367ft) 60°x25° - 80m (262ft) 80°x30° - 52m (171ft) 120°x50° - 35m (115ft) + 30, 50 and 120° circular options
<b>Input</b>	110-254V 50/60Hz AC only Low voltage option also available.	110-254V 50/60Hz AC only Low voltage option also available.	110-254V 50/60Hz AC only Low voltage option also available.	110-254V 50/60Hz AC only Low voltage option also available.	110-254V 50/60Hz AC only Low voltage option also available.
<b>Beam Shape</b>	Elliptical or Circular	Elliptical or Circular	Elliptical or Circular	Elliptical or Circular	Elliptical or Circular
<b>Beam Angle System</b>	Vario interchangeable lens system (elliptical) / Fixed (circular)	Vario interchangeable lens system (elliptical) / Fixed (circular)	Vario interchangeable lens system (elliptical) / Fixed (circular)	Vario interchangeable lens system (elliptical) / Fixed (circular)	Vario interchangeable lens system (elliptical) / Fixed (circular)
<b>Consumption</b>	136W	139W	68W	71W	34W
<b>LED type</b>	Platinum Elite SMT LEDs	Platinum Elite SMT LEDs	Platinum Elite SMT LEDs	Platinum Elite SMT LEDs	Platinum Elite SMT LEDs
<b>Number of LEDs</b>	48	48	24	24	12
<b>Wavelength</b>	850nm	850nm	850nm	850nm	850nm
<b>IP Rating</b>	IP66 and IP67	IP66 and IP67	IP66 and IP67	IP66 and IP67	IP66 and IP67
<b>Temperature Range</b>	-52°C to +50°C (-62°F to 122°F)	-20°C to +50°C (-4°F to 122°F)	-52°C to +50°C (-62°F to 122°F)	-20°C to +50°C (-4°F to 122°F)	-52°C to +50°C (-62°F to 122°F)
<b>Colour</b>	Silver/Grey	Silver/Grey	Silver/Grey	Silver/Grey	Silver/Grey
<b>Weight</b>	16kg (35.2lbs)	20kg (44lbs)	8kg (17.6lbs)	10kg (22lbs)	5kg (11lbs)
<b>Dimensions</b>	291 x 438 x 151mm (11.4 x 17.2 x 5.9")	291 x 438 x 215mm (11.4 x 17.2 x 8.5")	291 x 247 x 150mm (11.5 x 9.7 x 6")	291 x 247 x 215mm (11.5 x 9.7 x 8.5")	192 x 206 x 170mm (7.6 x 8.1 x 6.7")
<b>Additional Features</b>	CoolExtrude™ Thermal Management Removable PSU and LED modules Smart access wiring system Photocell (optional) T4, T5 and T6 Variants	CoolExtrude™ Thermal Management Removable PSU and LED modules Smart access wiring system Photocell (optional) T4, T5 and T6 Variants	CoolExtrude™ Thermal Management Removable PSU and LED modules Smart access wiring system Photocell (optional) T4, T5 and T6 Variants	CoolExtrude™ Thermal Management Removable PSU and LED modules Smart access wiring system Photocell (optional) T4, T5 and T6 Variants	CoolExtrude™ Thermal Management Removable PSU and LED modules Smart access wiring system Photocell (optional) T4, T5 and T6 Variants

## Emergency Battery Back-up

<b>Battery</b>	Ni/Cd 12V 4.5Ah	Ni/Cd 12V 4.5Ah
<b>Duration</b>	1hr @ 100% power (2x battery units) 2hrs @ 50% power (2 x battery units) 1hr @ 50% power (1x battery unit) 2hrs @ 25% power (1 x battery unit)	1hr @ 100% power 2hrs @ 50% power
<b>Charge Time</b>	20 hours	20 hours



**VARIO** LIGHTHOUSE KIT IR



**VARIO** LIGHTHOUSE KIT WL



**VARIO** LIGHTHOUSE KIT HYBRID



**VARIO** HYBRID



**VARIO** D-ZOOM i8

Max Distance	220m (722ft)	150m (492ft)	120m (394ft)	208m (683ft)	120m (394ft)
Angles and Max Distances	10°x10° - 220m (722ft) 35°x10° - 120m (394ft) 60°x25° - 65m (213ft) 80°x30° - 45m (148ft) 120°x50° - 30m (98ft)	10°x10° - 150m (492ft) 35°x10° - 80m (262ft) 60°x25° - 45m (148ft) 80°x30° - 30m (98ft) 120°x50° - 20m (66ft)	10°x10° - 120m (394ft) IR and 90m (295ft) WL 35°x10° - 65m (213ft) IR and 55m (180ft) WL 60°x25° - 45m (148ft) IR and 30m (98ft) WL 80°x30° - 30m (98ft) IR and 20m (66ft) WL 120°x50° - 20m (66ft) and 15m (49ft) WL	10°x10° - 208m (683ft) IR and 134m (440ft) WL 35°x10° - 114m (375ft) IR and 72m (236ft) WL 60°x25° - 62m (204ft) IR and 40m (131ft) WL 80°x30° - 42m (141ft) IR and 27m (89ft) WL 120°x50° - 28m (92ft) IR and 18m (59ft) WL	10° - 80° 10° - 120m (394ft) 80° - 30m (98ft)
Input	15-24V AC/DC	15-24V AC/DC	15-24V AC/DC	12-24V AC/DC	12-24V AC/DC
Beam Shape	Elliptical with HRT (Hot Spot Reduction Technology)	Elliptical with HRT (Hot Spot Reduction Technology)	Elliptical with HRT (Hot Spot Reduction Technology)	Elliptical with HRT (Hot Spot Reduction Technology)	Elliptical with HRT (Hot Spot Reduction Technology)
Beam Angle System	VARIO interchangeable lens system	VARIO interchangeable lens system	VARIO interchangeable lens system	VARIO interchangeable lens system	VARIO Zoom System
Consumption	59W (including approx camera consumption) 24W per LED panel	59W (including approx camera consumption) 24W per LED panel	59W (including approx camera consumption) 24W per LED panel	48W	48W
LED type	Platinum SMT LEDs	Platinum SMT LEDs	Platinum SMT LEDs	Platinum Elite SMT LEDs	Platinum SMT LEDs
Number of LEDs	48	48	48	24	24
WL Power output (luminous flux)	N/A	2904lm	1452lm	2650 lm	N/A
Wavelength	850nm (940nm options available)	White-Light	850nm and White-Light (940nm options available)	850nm and White-Light (940nm options available)	850nm (940nm options available)
IP Rating	IP66	IP66	IP66	IP66	IP66
Temperature Range	-50° to +50°C (-58 to 122°F)	-50° to +50°C (-58 to 122°F)	-50° to +50°C (-58 to 122°F)	-50° to +50°C (-58 to 122°F)	-50° to +50°C (-58 to 122°F)
Colour Temperature (White-Light)	N/A	5700k	5700k	5700k	N/A
Colour	Black	Black	Black	Black	Black
Weight	4.0kg (8.8lbs)	4.0kg (8.8lbs)	4.0kg (8.8lbs)	1650g (3.6lbs)	1.65kg (3.6lbs)
Dimensions	286 x 302 x 173mm 11.3" x 11.9" x 6.8" approx	286 x 302 x 173mm 11.3" x 11.9" x 6.8" approx	286 x 302 x 173mm 11.3" x 11.9" x 6.8" approx	135 x 180 x 68.2mm 5" x 7" x 3.2" approx.	135 x 180 x 68.2mm 5" x 7" x 3.2" approx
Additional Features	Full lighting system with camera housing Accommodates up to 2 Cameras: IP or Analogue Pre-wired and cable managed bracket Standard kit includes 10°x10°, 35°x10° and 60°x25° angles	Full lighting system with camera housing Accommodates up to 2 Cameras: IP or Analogue Pre-wired and cable managed bracket Standard kit includes 10°x10°, 35°x10° and 60°x25° angles	Full lighting system with camera housing Accommodates up to 2 Cameras: IP or Analogue Pre-wired and cable managed bracket Standard kit includes 10°x10°, 35°x10° and 60°x25° angles	LED status indicator Photocell following output Photocell Standard kit includes 10°x10°, 35°x10° and 60°x25° angles	LED status indicator Photocell following output Photocell
Perfect Partner	Optional VARIO Remote control for increased feature set*. VARIO PSU*	Optional VARIO Remote control for increased feature set*. VARIO PSU*	Optional VARIO Remote control for increased feature set*. VARIO PSU*	Optional VARIO Remote control for increased feature set*. VARIO PSU*	Optional VARIO Remote control for increased feature set*. VARIO PSU*



HYBRID 200



HYBRID 150



HYBRID 100



VARIO D-ZOOM w8



VARIO ESP

Max Distance	112m (367ft)	80m (262ft)	55m (180ft)	90m (295ft)	120m (394ft)
Angles and Max Distances	30° (112m/367ft IR and 70m/230ft WL) 50° (80m/262ft IR and 50m/164ft WL) angles from 10° to 120° available	30° (80m/262ft IR and 40m/131ft WL) 50° (56m/184ft IR and 30m/98ft WL) angles from 10° to 120° available	30° (55m/180ft IR and 40m/131ft WL) 50° (40m/131ft IR and 30m/98ft WL) angles from 10° to 120° available	10° - 80° 10° - 90m (295ft) 80° - 20m (66ft)	10°x10° - 120m (394ft) (2 lights) 35°x10° - 65m (213ft) (2 lights) 60°x25° - 45m (148ft) (2 lights) 80°x30° - 30m (98ft) (2 lights) 120°x50° - 20m (66ft) (2 lights)
Input	Universal 100-230V AC - comes with PSU (See details below)	Universal 100-230V AC - comes with PSU (See details below)	Universal 100-230V AC - comes with PSU (See details below)	12-24V AC/DC	12-24V AC/DC
Beam Shape	Circular	Circular	Circular	Elliptical with HRT (Hot Spot Reduction Technology)	Elliptical with HRT (Hot Spot Reduction Technology)
Beam Angle System	Fixed	Adaptive Illumination™ - IR / Fixed - WL	Fixed	VARIO Zoom System	VARIO interchangeable lens system
Consumption	80W	75W	50W	48W	12W each
LED type	Platinum SMT LEDs - WL	Platinum SMT LEDs - WL	Platinum SMT LEDs - WL	Platinum SMT LEDs	Platinum SMT LEDs - WL
Number of LEDs	24 - WL / 188 - IR	16 - WL / 216 - IR	16 - WL / 108 - IR	24	6 (each light)
WL Power output (luminous flux)	2125lm	1394lm	1394lm	1452lm	N/A
Wavelength	850nm and White Light	850nm and White Light	850nm and White Light	White-Light	850nm (940nm options available)
IP Rating	IP66	IP66	IP66	IP66	IP66
Temperature Range	-50° to +50°C (-58 to 122°F)	-50° to +50°C (-58 to 122°F)	-50° to +50°C (-58 to 122°F)	-50° to +50°C (-58 to 122°F)	-50° to +50°C (-58 to 122°F)
Colour Temperature (White-Light)	5800k	5800k	5800k	5700k	N/A
Colour	Black and Silver	Black and Silver	Black and Silver	Silver	Black
Weight	4kg (8.8lbs)	3.75kg (8.3lbs)	2.5kg (5.5lbs)	1.65kg (3.6lbs)	600g (1.3lbs) each
Dimensions	280 x 195 x 66mm 11" x 8" x 3" approx	315 x 135 x 55mm 12" x 5" x 2" approx	210 x 150 x 65mm 8" x 6" x 3" approx	135 x 180 x 68.2mm 5" x 7" x 3.2" approx	75 x 100 x 64mm 3" x 4" x 2.5" approx
Additional Features	Power Adjust Telemetry Control Adjustable Photocell Independent control of IR & WL	Power Adjust Telemetry Control Adjustable Photocell Independent control of IR & WL	Power Adjust Telemetry Control Adjustable Photocell Independent control of IR & WL	LED status indicator Photocell following output Photocell	LED status indicator Photocell following output Photocell Standard kit includes 10°x10°, 35°x10° and 60°x25° angles
Perfect Partner	See Accessories Section*	See Accessories Section*	See Accessories Section*	Optional VARIO Remote control for increased feature set*. VARIO PSU*	Optional VARIO Remote control for increased feature set*

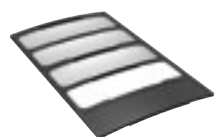
External Power Supply (included)

Input	Universal 100-230V AC auto-sensing	Universal 100-230V AC auto-sensing	Universal 100-230V AC auto-sensing		
Output	120W	120W	120W		
Weights	2.4kg (5.3lbs)	2.4kg (5.3lbs)	2.4kg (5.3lbs)		
Dimensions	240 x 160 x 81mm 9" x 6" x 3" approx	240 x 160 x 81mm 9" x 6" x 3" approx	240 x 160 x 81mm 9" x 6" x 3" approx		

\* Please see Accessories on Pages 17-18



## VARIO Lenses



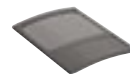
**VARIO i16 LENS**



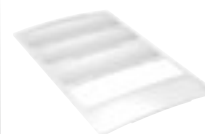
**VARIO i8 LENS**



**VARIO i4 LENS**



**VARIO i2 LENS**



**VARIO w16 LENS**



**VARIO w8 LENS**



**VARIO w4 LENS**



**VARIO w2 LENS**

Description	Lens insert for VARIO i16	Lens insert for VARIO i8	Lens insert for VARIO i4	Lens insert for VARIO i2	Lens insert for VARIO w16	Lens insert for VARIO w8	Lens insert for VARIO w4	Lens insert for VARIO w2
Variations	35° x 10° 60° x 25° 80° x 30° 120° x 50°	35° x 10° 60° x 25° 80° x 30° 120° x 50°	35° x 10° 60° x 25° 80° x 30° 120° x 50°	35° x 10° 60° x 25° 80° x 30° 120° x 50°	35° x 10° 60° x 25° 80° x 30° 120° x 50°	35° x 10° 60° x 25° 80° x 30° 120° x 50°	35° x 10° 60° x 25° 80° x 30° 120° x 50°	35° x 10° 60° x 25° 80° x 30° 120° x 50°

## VARIO Accessories



**VARIO REMOTE**



**DAYTIME SET-UP TOOL**

Description	Remote control to enable advanced features on VARIO	Daytime set-up tool for VARIO and other Raytec illuminators
-------------	---	---

## VARIO Power Supply Units



**VARIO PSU 1x2 (small)**



**VARIO PSU 2x4 (medium)**



**VARIO PSU 2x8 (large)**



**VARIO PSU 3x8 (x-large)**

Designed to power any VARIO illuminator, including VARIO IP, with 24V output and CAT5 connectivity. One PSU can power multiple illuminators

Description	20W - powers 1x VARIO 2 series illuminator	50W - powers 2x VARIO 4 series illuminators*	100W - powers 2x VARIO 8 series illuminators*	150W - powers 3x VARIO 8 series illuminators*
-------------	--	--	---	---

\* or any combination of units within equivalent max power

## VARIO Universal Bracket



**VUB-POLE**



**VUB-WALL**



**VUB-PLATE-3x2**



**VUB-PLATE-3x4**



**VUB-PLATE-3x8**



**VUB-PLATE-1x16**



**VUB-PLATE-PSU**

Description	Universal Bracket for custom mounting and configuration of all VARIO illuminators		VUB Plates allow mounting of multiple illuminators and PSUs*				
	Pole Mount Bracket	Wall Mount Bracket	Allows mounting of 3x VARIO 2 series illuminators**	Allows mounting of 3x VARIO 4 series illuminators**	Allows mounting of 3x VARIO 8 series illuminators**	Allows mounting of 1x VARIO 16 series illuminator**	Allows mounting of any 1x VARIO PSU
*VUB Plates are to be used with VUB-POLE and VUB-WALL brackets      **Various configurations of VARIO panel sizes and positions possible – see VUB Bracket Summary							

## Standard Brackets



**SB1**



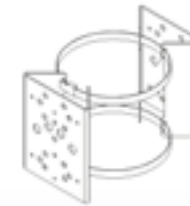
**DB2**



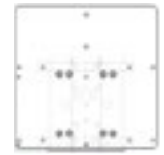
**WB1**



**PBC1**



**PBC2**



**PBC-PSU-ADAP**

Description	Single unit bracket for Top Pan/Tilt System	Double unit bracket for Top Pan/Tilt System	Wall Bracket - L Shape	Pole Bracket Clamp for 1 x illuminator	Pole Bracket Clamp for 2 x illuminators	Adaptor to convert 1 mount on PBC1 or PBC2 to fit a PSU
-------------	---	---	------------------------	--	---	---

## Urban Brackets



**UB-WB**



**UB-TS-S**



**UB-TS-T**



**UB-HB-S**



**UB-HB-T**

Description	Cable Managed wall bracket for Urban illuminators	Cable managed stub bracket for 1 x illuminator, 90 degree	Cable managed stub bracket for 2 x illuminators, 90 degree	Cable managed hockey bracket for 1 x illuminator	Cable managed hockey bracket for 2 x illuminators
Variations		Flat 5 degree uplift	Flat 5 degree uplift		



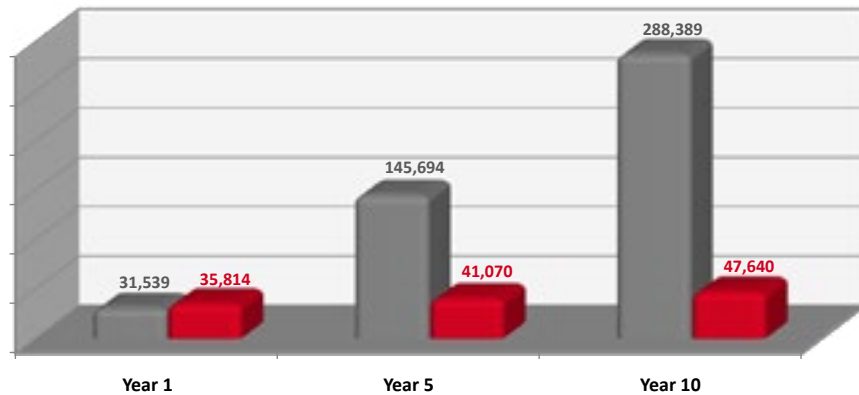
### 2D Lighting Design

Detailed plan of the site  
Recommended product type  
Recommended number of lights  
Average, max and min light levels



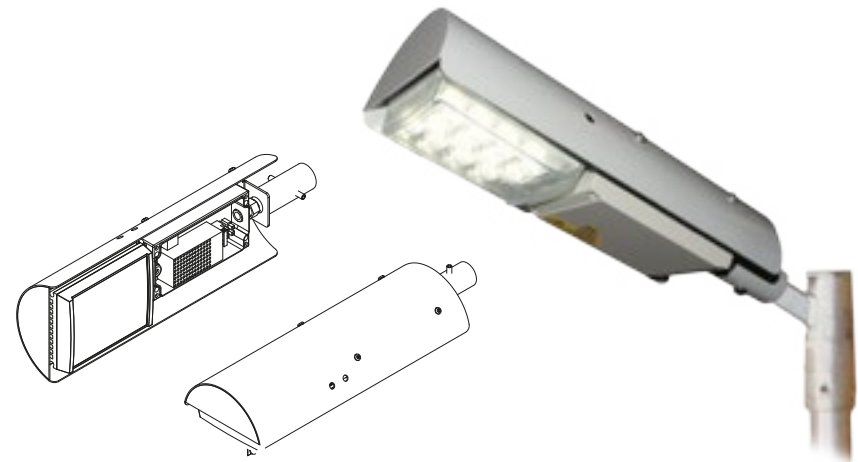
### 3D Lighting Design

Visual representation of the site  
Recommended product type  
Recommended number of lights  
Average, max and min light levels



### Energy and Cost Saving Report

Customer specific survey  
Energy, CO2 savings and ROI  
Cost savings over 1,5 and 10 years



### Special Operations Division

Custom-Built Product Design  
Bespoke Projects  
Challenging Applications



An Illuminating Choice  
for Any Application

Global HQ

T: +44 (0) 1670 520055  
F: +44 (0) 1670 819760  
sales@raytecctv.com

Americas

T: +1 613 270 9990  
T: +1 888 505 8335 (Toll Free)  
ussales@raytecctv.com

[www.raytecctv.com](http://www.raytecctv.com)